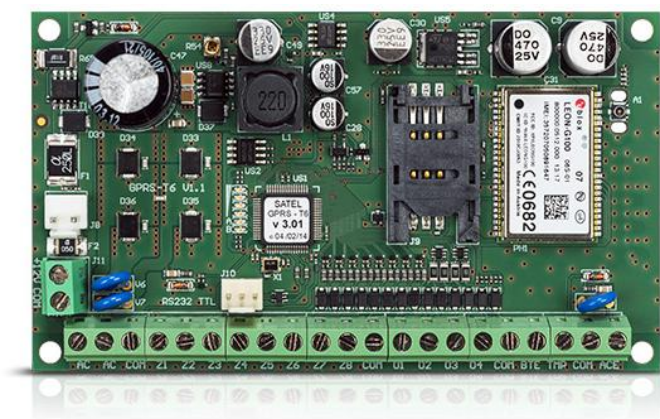


# GPRS-T6

## GPRS/SMS REPORTING MODULE WITH BUFFER POWER SUPPLY

The versatile **GPRS-T6** communication unit is designed for GPRS and SMS monitoring from any alarm control panel or other device. An additional functionality of the **GPRS-T6** unit is the remote control of the module's outputs, which allow for e.g. activation or deactivation of the alarm system stand-by mode using SMS. The built-in buffer power supply in the **GPRS-T6** module allows continued communication even if the main power supply fails.

- 8 monitoring triggering or message inputs
- dedicated inputs for alarm system failure signals
- dedicated input for AC power supply monitoring
- 4 outputs with remote control option
- automatic switching to SMS in case of lack of GPRS signal
- SMS/CLIP messaging
- sending test transmission using CLIP
- communication failure signalling
- built-in 2 A buffer power supply



### TECHNICAL DATA

Environmental class	II
Number of OC outputs	4
Power supply type	A
Number of inputs (zones)	8+3
Power supply rating	2 A
Board dimensions	120 x 68,5 mm
Operating temperature range	-10...+55 °C
Current consumption from 230 V mains - standby	110 mA
Current consumption from 230 V mains - maximum	150 mA
Current consumption from battery - maximum	400 mA
Current consumption from battery - standby	120 mA
Recommended transformer type	TR40VA (40VA / 18VAC)
Output voltage range	10,5...13,8 V DC
Battery failure voltage threshold (±10%)	11 V
Battery cut-off voltage (±10%)	10,5 V
Number of outputs power	1
Supply voltage (±10%) [V AC]	18 V AC
Battery charging current (±20%)	250 mA
Device + housing weight	1012 g
Permissible voltage on the ACE	up to 25 V
Current carrying capacity of the output +12V	500 mA
Current carrying capacity of the output operating as a malfunction indicator	50 mA